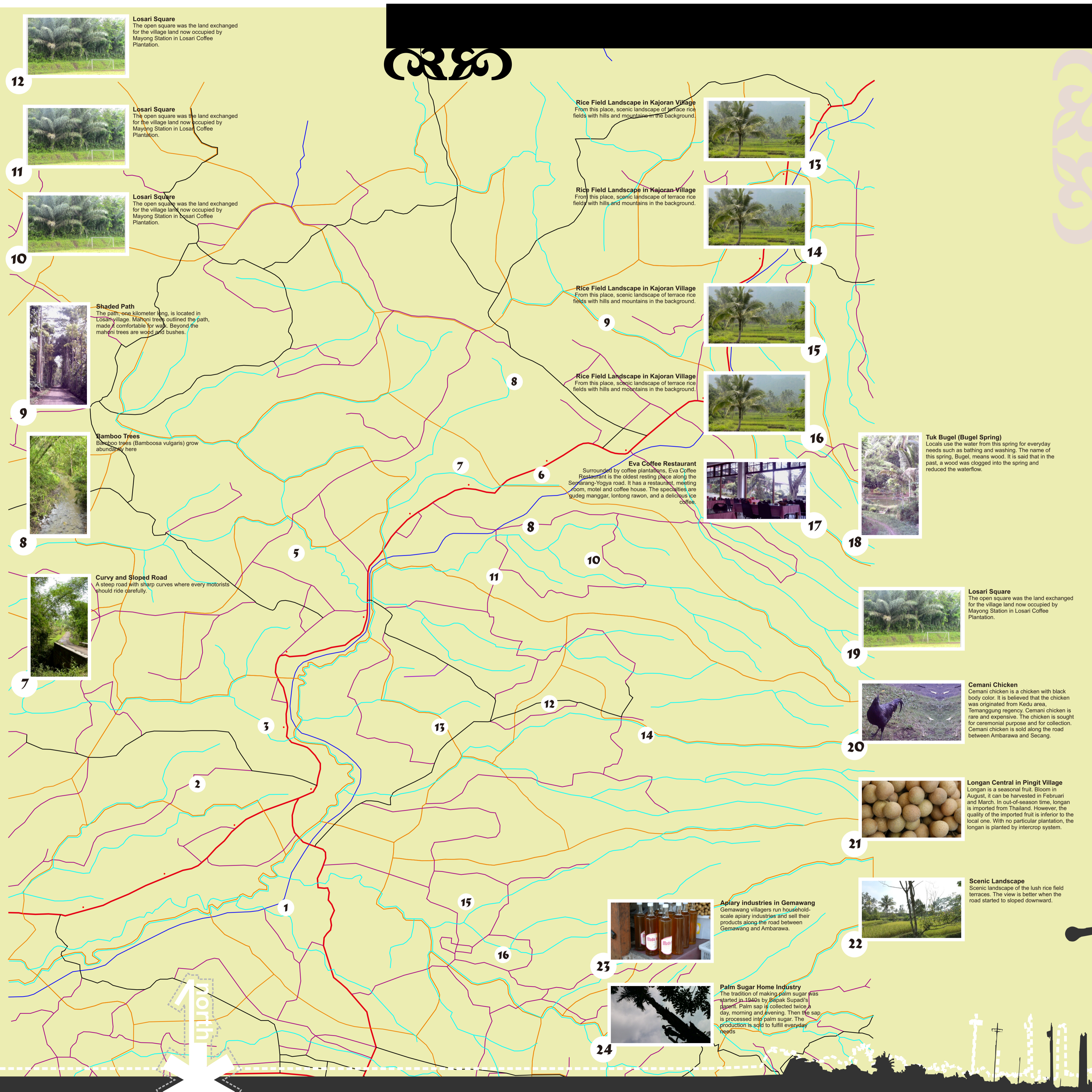




# Losari and its surrounding

Losari Coffee Plantation Resort & Spa is built on a 20 ha coffee plantation in Central Java, halfway between Yogyakarta, Semarang and Solo. The Plantation produces high-quality organic robusta coffee beans every year and all visitors are welcome to tour and learn all about the coffee growing and harvesting process.

The stunning resort is situated on a hill with a breathtaking panoramic view of 8 volcanoes. One's first impression of Losari will be of living in an old Javanese coffee plantation.



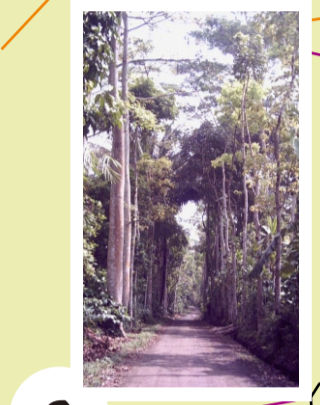
**Losari Square**  
The open square was the land exchanged for the village land now occupied by Mayong Station in Losari Coffee Plantation.



**Losari Square**  
The open square was the land exchanged for the village land now occupied by Mayong Station in Losari Coffee Plantation.



**Losari Square**  
The open square was the land exchanged for the village land now occupied by Mayong Station in Losari Coffee Plantation.



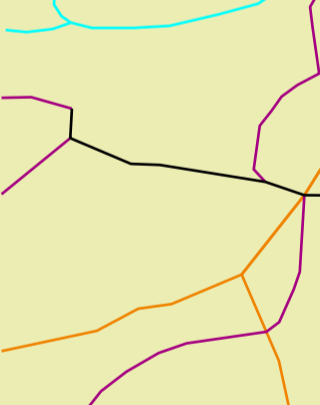
**Shaded Path**  
The path, one kilometer long, is located in Losari village. Mahoni trees outlined the path, made it comfortable for walk. Beyond the mahoni trees are wood and bushes.



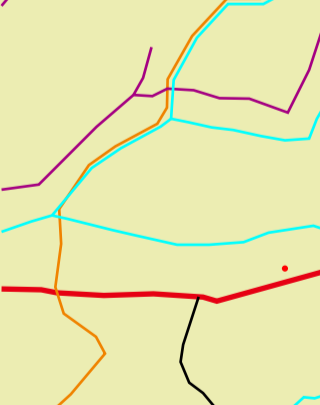
**Bamboo Trees**  
Bamboo trees (Bamboosa vulgaris) grow abundantly here.



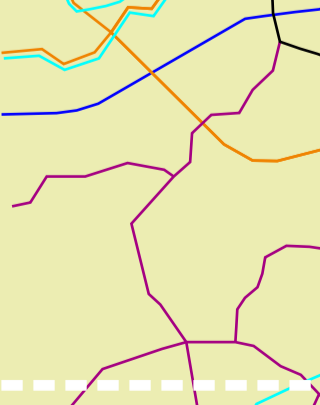
**Curvy and Sloped Road**  
A steep road with sharp curves where every motorists should ride carefully.



**Grabag Livestock Market**  
Grabag Livestock Market is a traditional livestock market. It opens on certain days in accordance with Javanese almanac. This market opens on Legi day, from 07.00 - 15.00 WIB. Cattle and sheep is sold here.



**Grabag Livestock Market**  
Grabag Livestock Market is a traditional livestock market. It opens on certain days in accordance with Javanese almanac. This market opens on Legi day, from 07.00 - 15.00 WIB. Cattle and sheep is sold here.



**Grabag Livestock Market**  
Grabag Livestock Market is a traditional livestock market. It opens on certain days in accordance with Javanese almanac. This market opens on Legi day, from 07.00 - 15.00 WIB. Cattle and sheep is sold here.



**Telomoyo Specialty Store**  
The store sells sale pisang, a delicious specialty snack. It also sells other snack from processed banana such as fried sale pisang, non-fried sale pisang, and banana chips. The store is a family business for two generations.



**PTPN IX Banaran**  
Merupakan perkebunan coklat (theobroma cacao) seluas 400 ha yang dikelola pemerintah. Sebelumnya ditanami kopi, namun karena terkena virus, perkebunan kopi diganti menjadi perkebunan coklat. Selain menanam dan mengolah coklat, pabrik ini menerima pengolahan kopi dari perkebunan kopi Bowen yang terletak di Asinan.



**Sekarlangit Waterfall**  
This beautiful waterfall is located in Telogorejo Village, Kecamatan Grabag, Kabupaten Magelang. Before arriving to the waterfall, visitors can enjoy beautiful view and shady bamboo trees.

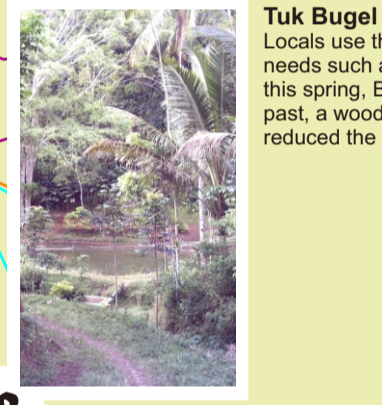
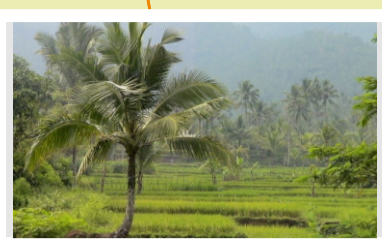
**Rice Field Landscape in Kajoran Village**  
From this place, scenic landscape of terrace rice fields with hills and mountains in the background.

**Rice Field Landscape in Kajoran Village**  
From this place, scenic landscape of terrace rice fields with hills and mountains in the background.

**Rice Field Landscape in Kajoran Village**  
From this place, scenic landscape of terrace rice fields with hills and mountains in the background.

**Rice Field Landscape in Kajoran Village**  
From this place, scenic landscape of terrace rice fields with hills and mountains in the background.

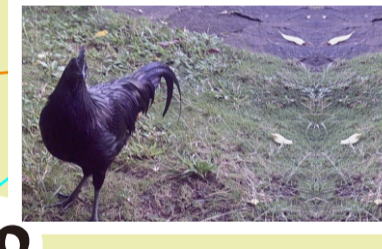
**Eva Coffee Restaurant**  
Surrounded by coffee plantations, Eva Coffee Restaurant is the oldest resting place along the Semarang-Yogya road. It has a restaurant, meeting room, motel and coffee house. The specialties are gudeg munggar, lontong rawon, and a delicious ice coffee.



**Tuk Bugel (Bugel Spring)**  
Locals use the water from this spring for everyday needs such as bathing and washing. The name of this spring, Bugel, means wood. It is said that in the past, a wood was clogged into the spring and reduced the waterflow.



**Losari Square**  
The open square was the land exchanged for the village land now occupied by Mayong Station in Losari Coffee Plantation.



**Cemani Chicken**  
Cemani chicken is a chicken with black body color. It is believed that the chicken was originated from Kedu area, Temanggung regency. Cemani chicken is rare and expensive. The chicken is sought for ceremonial purpose and for collection. Cemani chicken is sold along the road between Ambarawa and Secang.



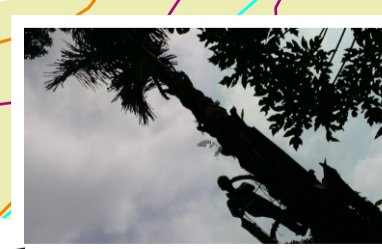
**Longan Central in Pingit Village**  
Longan is a seasonal fruit. Bloom in August, it can be harvested in Februari and March. In out-of-season time, longan is imported from Thailand. However, the quality of the imported fruit is inferior to the local one. With no particular plantation, the longan is planted by intercrop system.



**Scenic Landscape**  
Scenic landscape of the lush rice field terraces. The view is better when the road started to sloped downward.



**Apiary Industries in Gemawang**  
Gemawang villagers run household-scale apary industries and sell their products along the road between Gemawang and Ambarawa.



**Palm Sugar Home Industry**  
The tradition of making palm sugar was started in 1940s by Bapak Supadi's figure. Palm sap is collected twice a day, morning and evening. Then the sap is processed into palm sugar. The production is sold to fulfill everyday needs.

## the map legend

- government office
- museum
- colonial style building
- temple
- monument
- police department
- gas station
- mosque
- church
- buddhist temple
- hindus temple
- andong
- train station
- cemetery
- restaurant
- cafe

### natural heritage

- mountain
- waterfall
- river
- palm tree plantation
- plants
- coffee plantation
- rice field
- bamboo
- fruit
- cocoa plantation
- agrotourism
- forest

### cultural heritage

- traditional ceremony
- traditional shop
- traditional market
- traditional craft
- traditional dance
- traditional animal market
- spiritual site

### cultural landscape

- tradisional village
- historical district
- scenic beauty

