

## Losari - Semarang

Losari Coffee Plantation Resort & Spa is built on a 20 ha coffee plantation in Central Java, halfway between Yogyakarta, Semarang and Solo. The Plantation produces high-quality organic robusta coffee beans every year and all visitors are welcome to tour and learn all about the coffee growing and harvesting process.

The stunning resort is situated on a hill with a breathtaking panoramic view of 8 volcanoes. One's first impression of Losari will be of living in an old Javanese coffee plantation.

**Palagan Ambarawa Monument**  
Located in Sudirman Street, Ambarawa, this monument was built to commemorate the heroic deeds of Colonel Isdiman who died during the war in Palagan Ambarawa.



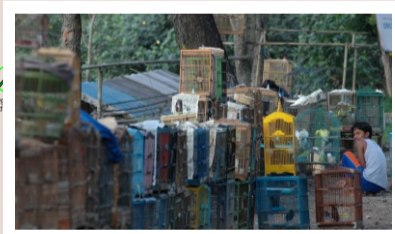
4

**Tloto Agritourism**  
Tloto is a 414 ha plantation complex, situated at 400-675 meters above sea level. Run by Central Java Government, Tloto is a mixed plantation with mainly homogenous crops such as rubber, clove, fruits, and such. Some natural activities that can be enjoyed here are camping in the rubber forest, plantation tour, swimming and rubber-tapping.



3

**Bawen Livestock Market**  
Bawen Livestock Market is a traditional livestock market held only on certain days based on Javanese almanac. It opens every Pon days.



2

**Eva Coffee Restaurant**  
Surrounded by coffee plantations, Eva Coffee Restaurant is the oldest resting place along the Semarang-Yogya road. It has a restaurant, meeting room, motel and coffee house. The specialties are gudeg manggar, lontong rawon, and a delicious ice coffee.



1

**Sam Po Kong Temple, Gedong Batu**  
Sam Po Kong Temple was built in the landing site of Zheng He, also known as Sam Po Tay Djen, a Chinese Admiral. The temple is situated in Simongan, southwest Semarang. Its shape resembles a stone cave in a hill, therefore named Gedong Batu (Stone Building). The 600th anniversary of voyage of Admiral Zheng He in Semarang is highlighted in this temple. As preparation for the celebration, the temple complex underwent a huge renovation. New temples were added and a huge statue of the Admiral was erected. A new relief depicting the admiral's voyage was also added on the temple's wall.



6

**Semarang Chinatown**  
The Chinatown is situated in the middle of the city, approximately 1 km south of Old City site. The area was established after the Chinese community rebelled against Dutch ruler. The Dutch then relocated the Chinese community from Simongan to an area near Semarang River. This area is now known as Chinatown. There are a lot of Chinese Temples in this area. One famous temple is Tay Kak Sie Temple in Gang Lombok. Lumpia, a famous Semarang snack, is also originated from Gang Lombok.



5

**Little Netherlands**  
Old City area in Semarang, also named Oudstadt. Its geographical condition made this area seem separated from the surrounding areas. Old City silently witnessed the two centuries of Dutch occupation in Indonesia. Fifty old buildings in this area still stand firm, as a part of colonial history in Semarang.



4

**Poncol Railway Station**  
Poncol Railway Station is quite old but still functioning as a station for economic class trains.



7

**Blenduk Church**  
The church was built on 17th century. Situated in Semarang Old City, an area nicknamed 'Little Netherlands', this church is an area landmark and also one of the city's important landmark. Blenduk church was built in Classic European style, with octagonal shape. Its main chamber, located in the middle, has a dome-shaped roof. It was named Blenduk because of this dome. ('Blenduk' is Javanese word for dome). The church was designed by HPA de Wilde and W. Westmas. For photographers, the church is an excellent photography object.



8

**Bedono Railway Station**  
Hidden from the road is Bedono Railway Station, an old colonial-style station. It now served as transit station for the Railway Mountain Tour.



9

**Railway Mountain Tour**  
Railway Mountain Tour is a fascinating special interest tourism program. The trip offers enjoyment and special sensation as the visitors ride the old train and visit colonial style railway stations. The trip run from Ambarawa to Bedono, with short transit in Jambu, where the locomotive is switched to the rear of the train for the climb to Bedono. The line is one of the three gauge railway lines in the world and the only one in Indonesia. For trip reservation, one can contact the Ambarawa Stationmaster.



10

**Ambarawa Railway Station and Museum**  
The station was built by King Willem I for military purpose. It ceased to operate in 1967. In 1976, the station was transformed into Railway Museum. Its collections including some old locomotives. The museum also conducts Railway Mountain Tour.



11

**Turtang Railway Station**  
Situated near Turtang River, the station was built in Indies architectural style. However, this station is no longer functioning, because the railway along the line is unable to sustain the load. Nowadays, it only serves as transit station for lorry from Ambarawa.



12

**Kedungjati Railway Station**  
The building resembles the Ambarawa Railway Station. Built 6 years after the Tanggung Railway Station, this station started its operation on 21 May, 1873. It is still active now.



13

**Serabi Kiosk**  
Serabi kiosks can be found along the Ambarawa-Semarang road. These small wooden kiosks sell Solo-style Serabi and Karak. One can also observe the making of the serabi and taste the fresh serabi served with warm coconut milk.



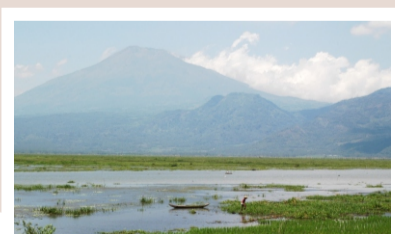
14

**Tanggung Railway Station**  
The first railway station in Indonesia, this station was built simultaneously with the establishment of the first railway line from Kemijen, Semarang to Tanggung. The station started its operation on 10 August, 1867.



15

**Rawa Pening**  
Rawa Pening spread between Merbabu Mt, Telomoyo Mt, Ungaran Mt, and Kendal Sodo Mt. It is a water recreation center with beautiful landscape and famous myth.



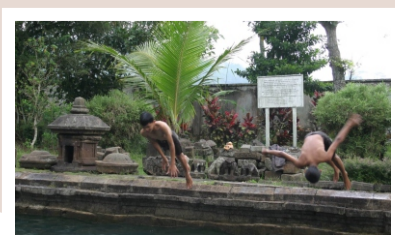
16

**Bandungan**  
Bandungan is located in the north east of Mt Ungaran, approximately 7 km from Gedong Songo temple. Bandungan is a beautiful tourism destination with fresh mountain air. Ever popular as vacation resort, Bandungan is also known for its fresh flowers, fruits and vegetables.



17

**Candi Umbul (Umbul Temple)**  
It is believed to be one of the oldest temple, built almost simultaneously with Borobudur Temple. There are two adjacent pools inside the temple complex. Umbul Temple and its surroundings formed a wonderful landscape. The temple is located in Pringsurat, Magelang, Central Java.



18

7errage map



Losari coffee plantation

a is  
1  
re  
ing  
-ii  
e.