

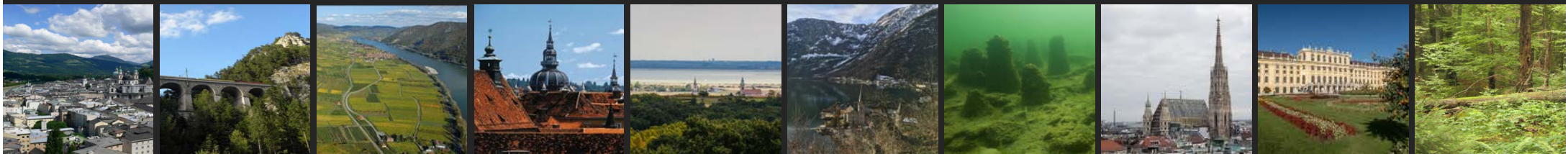


APPROACHES TO INCLUDE COMMUNITIES IN THE CONSERVATION OF CULTURAL HERITAGE

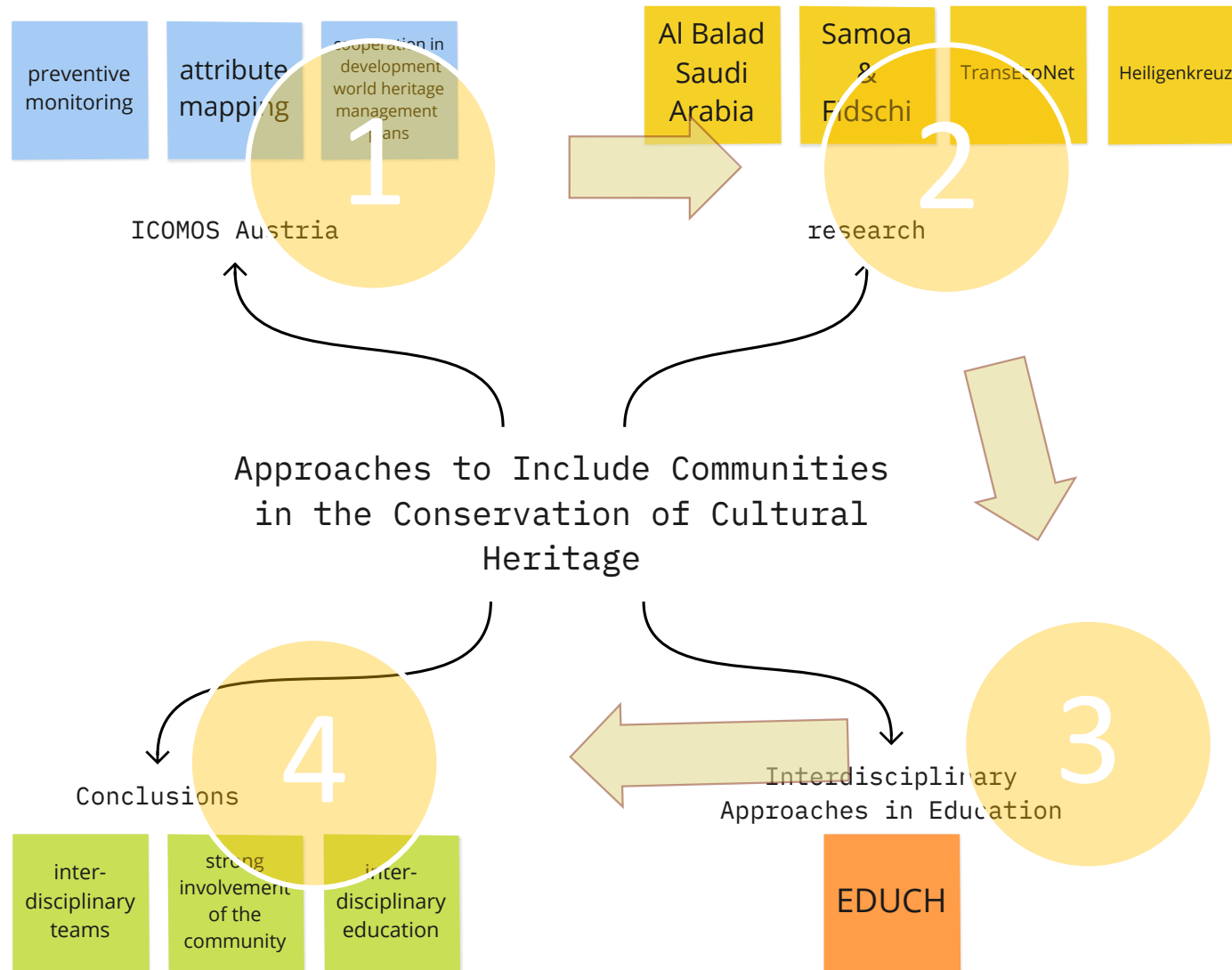
Ulrike Herbig

Research Group History of Architecture and Building Archaeology, TU Wien

ICOMOS Austria



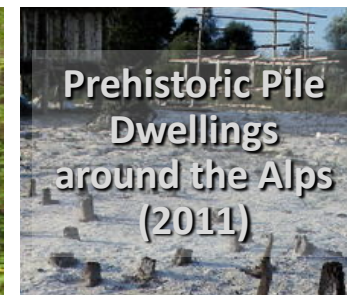
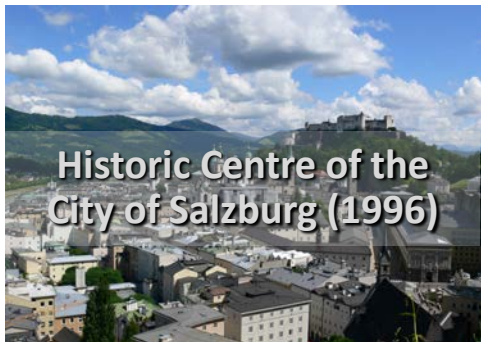
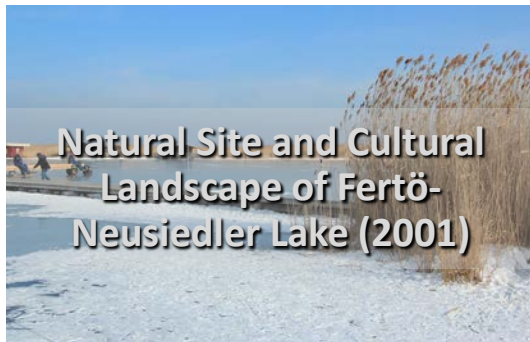
CONTENT



preventive
monitoring

attribute
mapping

cooperation in
development
world heritage
management
plans



- "ICOMOS (International Council on Monuments and Sites) is a non-governmental organization based in Paris, France. Founded in 1965, the Council's mission is to promote the application of theories, methods and scientific procedures to the conservation of the architectural and archaeological heritage. Its work is based on the principles of the 1964 International Charter for the Conservation and Restoration of Monuments and Sites (Venice Charter)."
- "Among the specific tasks of ICOMOS in relation to the Convention [note. the 1972 UNESCO World Heritage Convention] include assessing properties nominated for inscription on the World Heritage List [evaluation], monitoring the state of conservation of cultural properties included in the World Heritage List [preventive monitoring and periodic reporting], reviewing requests for international assistance submitted by States Parties [reactive monitoring], and providing advisory and practical support for capacity-building measures [mission awareness, expert network development and maintenance]."

German UNESCO Commission, Luxembourg UNESCO Commission, Austrian UNESCO Commission, Swiss UNESCO Commission (eds.), UNESCO World Heritage Manual. Handbook on the Implementation of the World Heritage Convention in Germany, Luxembourg, Austria and Switzerland, Bonn 2009, p. 210.





PREVENTIVE MONITORING



Approaches to Include Communities in the Conservation of Cultural Heritage

PREVENTIVE MONITORING



Approaches to Include Communities in the Conservation of Cultural Heritage

ATTRIBUTE MAPPING





ATTRIBUTE MAPPING



**Leitbild für das
Bauen im WeltkulturerbeWachau** Attribute-
Workshop 120.03. 2019
, Cristian Abrihan, Michael Kloos

WORLD HERITAGE SITE MANAGEMENT PLAN



Approaches to Include Communities in the Conservation of Cultural Heritage





APPROACHES IN RESEARCH

Heiligenkreuz

TransEcoNet

Al Balad
Saudi
Arabia

Samoa
&
Fidschi

APPROACHES IN RESEARCH



**Al Balad –
Old Jeddah
Saudi Arabia**



AL BALAD SAUDI ARABIA



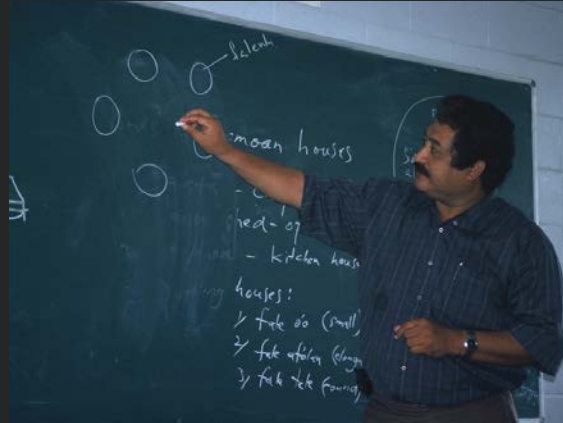


SAMOA AND FIDSCHI



Approaches to Include Communities in the Conservation of Cultural Heritage

SAMOA AND FIDSCHI

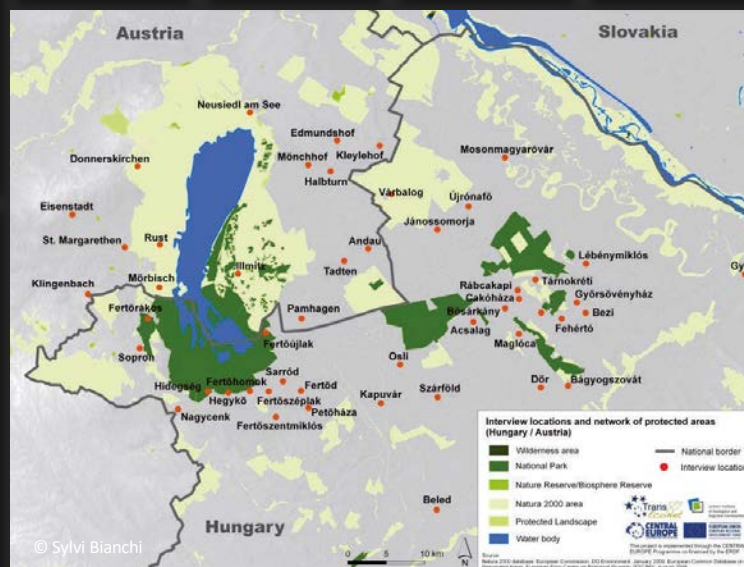




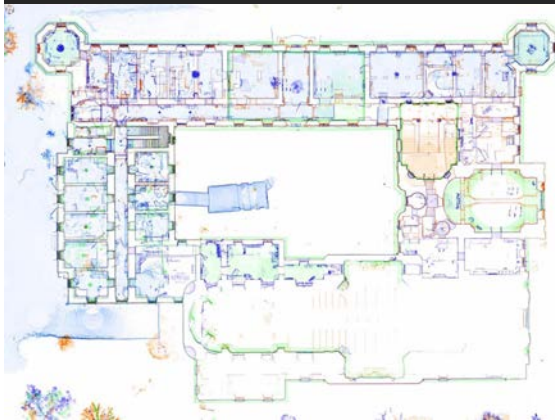
TransEcoNet
Transnational
Ecological Networks



© all images Lenka Ovčáčková







Approaches to Include Communities in the Conservation of Cultural Heritage

TRANSCONTINENTAL - INTERDISZIPLINARY - JOINT COURSES ON "APPROACHES TO ARCHITECTURE AND CULTURAL HERITAGE IN INDONESIA"

Within the framework of the Development of a Capacity Building Program in Higher Education:
Education in Conservation Theory and Practice for Cultural Heritage EDUCH

TU Wien-Vienna University of Technology, Austria (TU Wien)
Universitas Gadjah Mada, Yogyakarta, Indonesia (UGM)
Indonesia Institute of the Arts Yogyakarta, Indonesia (ISI)
Universitas Trisakti, Jakarta, Indonesia (USAKTI)
Universitas Udayana, Bali, Indonesia (UNUD)
Universitas Andalas, Padang, Sumatra, Indonesia (UNAND)

October 05, 2020 – January 25, 2021

Monday, 09:00-15:00 CEST

14:00 – 20:00 WIB



929 0312 1385*

Password: EDUCH2020



*
for registered staff and students, only
recordings of the classes can be shared on request

DESIGN PROPOSAL - LIVING WITH AND AROUND LOCALS

MAP OF INDONESIA



TRADITIONAL JAVANESE ARCHITECTURE



CONCEPT



HOMESTAY



INVOLVE
COMMUNITY

FUNCTIONS



MARKET SPACE



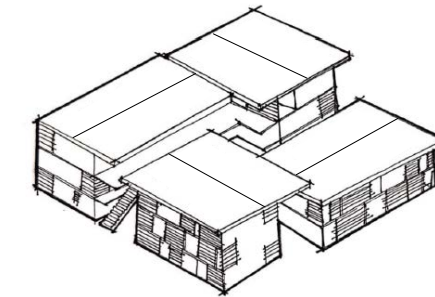
RESTAURANTS



COFFEE HOUSE



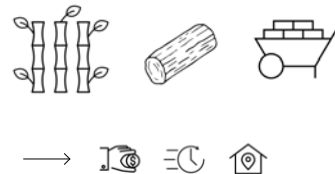
SHOPS



DESIGN PROPOSAL

HOUSES WITH COMMUNICATION ZONE ON GROUND FLOOR AND PRIVATE APARTMENTS ON UPPER FLOORS

LOCAL MATERIALS



PACKAGE 1: LIVING AROUND LOCALS

OWN APARTMENT USING THE PUBLIC COMMUNICATION ZONE (FAMILIES, PRIVATE VACATION)

PACKAGE 2: LIVING WITH LOCALS

OWN APARTMENT, LOCAL GUESTFAMILY AS GUIDES (EXCHANGE STUDENT, TRAVELERS)

GOALS



+ JOBS



+ INCOME



+ EXCHANGE



+ LIFE
EXPERIENCE



KOTAGEDE REKINDLED

Kotagede is the oldest traditional district of Yogyakarta. It was built in the 16th Century as the capital of the first Mataram Kingdom. This district is the origin of the Yogyakarta. It is the center of the traditional architecture and crafts.

In May 2008 Kotagede was heavily hit with an earthquake of 5.9 Richter scale. Both human and building casualties were too great. A lot was lost to the earthquake.



Many heritage buildings were destroyed, damaged, and some were damaged beyond repair. A lot of tangible and intangible heritage was lost.

Great efforts have been made to repair and rebuild the traditional houses. However, the main problem is the high cost of the proper reconstruction.

To help rebuild the traditional vernacular architecture in the spirit of tradition, rituals and to try to, as much as possible, to reach its authenticity we devised a model that could help reach this goal.

Digital Wishing Well is an interactive mixed reality cube that transforms depending on the need and it can be moved from one location to another. It would serve as a well of history and knowledge regarding Yogyakarta.

Kotagede and the destruction of the earthquake. A part of the cube would be reserved as a depot for donations or wishing well on Kotagede, where people could throw a penny and make a wish for Kotagede. All donations would be used toward the rebuilding efforts.



One would be positioned in Kotagede for tourist and locals to use, and the other in Vienna. The two cities would become sister cities and the cubes would act as a bridge between two cultures. In a way the spirit of

The Wishing Cube would display traditional aspects for which Kotagede and Yogyakarta are known like silver, bronze and copper crafts, embroidery, old market, traditional food and spices, street art, festivals, traditional architecture, etc.

This model was devised primarily to help residents of Kotagede, who have lost their homes in the earthquake, regain their homes, and to restore the damaged and lost cultural heritage. By acquiring donations using this model and through traditional practices and rituals like Goleg Royong, Arisan, and Petugan and detailed reconstruction, staying true to the details of the traditional vernacular architecture, it would be worked on restoring the authenticity of the traditional district.

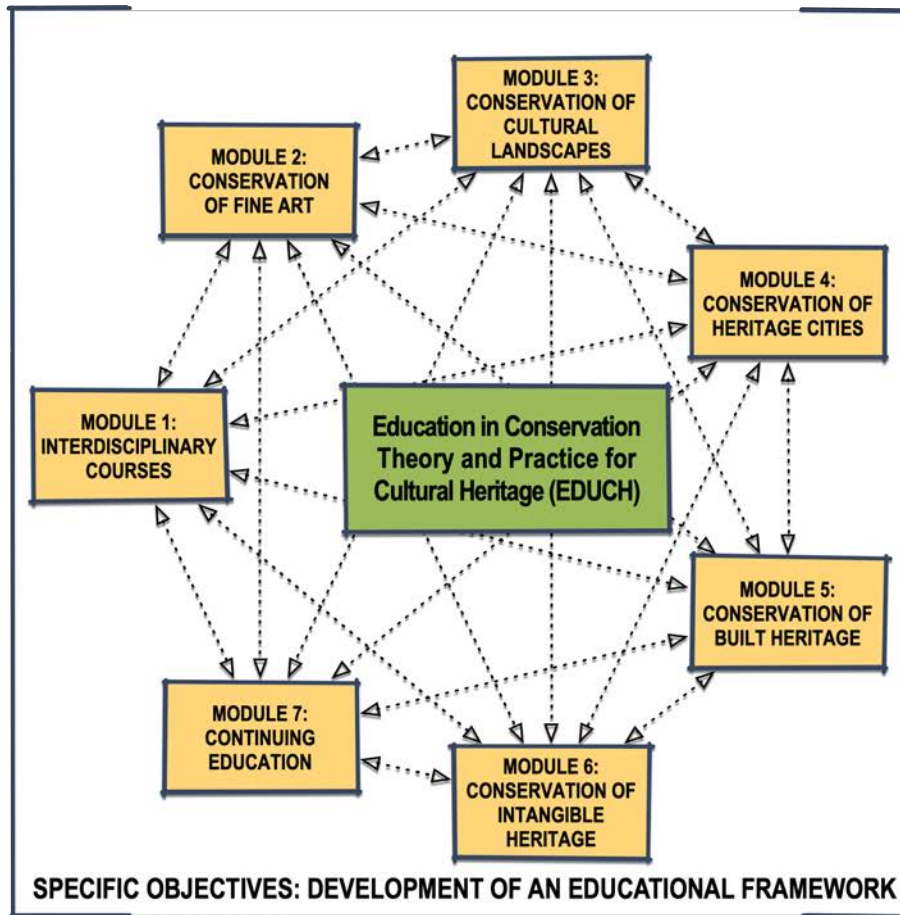
Main roles in making this possible belong to the governing bodies of these two cities, as well as local banks that would facilitate money transfers. Besides anonymous donations by passersby, a part of the money would be acquired by NGOs.



After confirming the success of this model, the Wishing Well Cubes could be distributed across the world creating a large international community bound by the tradition of Goleg Royong and Arisan.

INTERDISCIPLINARY EDUCATION

WIDER OBJECTIVE:
SUSTAINABLE CONSERVATION OF THE CULTURAL HERITAGE TO FOSTER FOR SUSTAINABLE DEVELOPMENT AND A RESILIENT SOCIETY



TARGET: AGENDA 2030

inter-
disciplinary
teams

strong
involvement
of the
community

inter-
disciplinary
education

