

Nishijin Cultural Landscape

Elementary School by and for the Community - Nishijin Traditional Textile Industry Area

May 8, 2021 Kiyoko KANKI @Kyoto University
Nishijin Chuo Elementary School



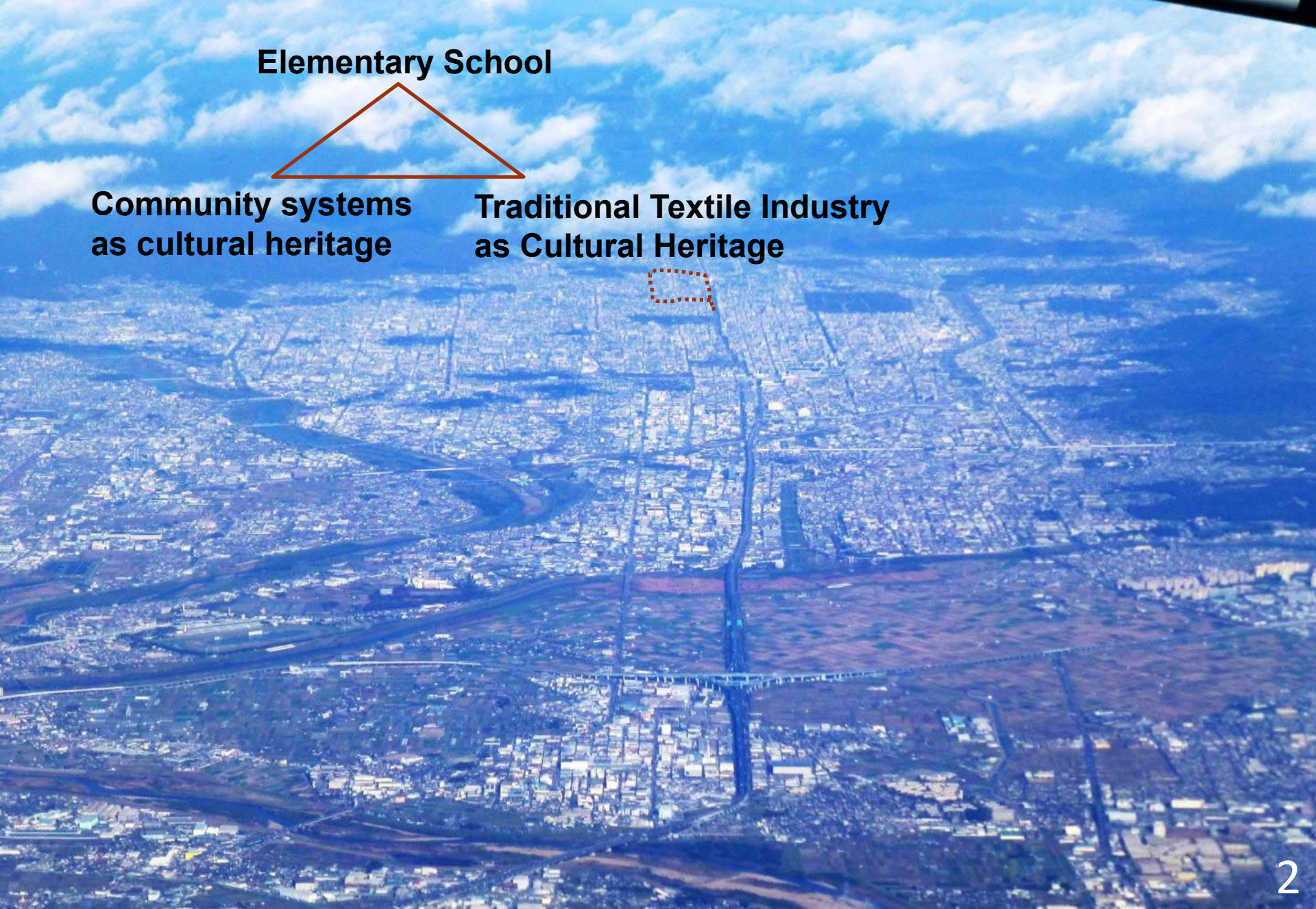
Nishijin Cultural Landscape

Elementary School



Community systems
as cultural heritage

Traditional Textile Industry
as Cultural Heritage



Nishijin Cultural Landscape

Community systems as cultural heritage

KYOTO

794-1867 Capital City

794 Planned City with grid-street systems

1467-77 Civil war (Ohnin no ran)

Development of Community system

1868- Modernization Era

“Modernization of Kyoto”

earliest in JPY

→Elementary schools were established and constructed by the new community system which formed of the basic units. The schools was with community's self budget, also used as the community's office and hall.

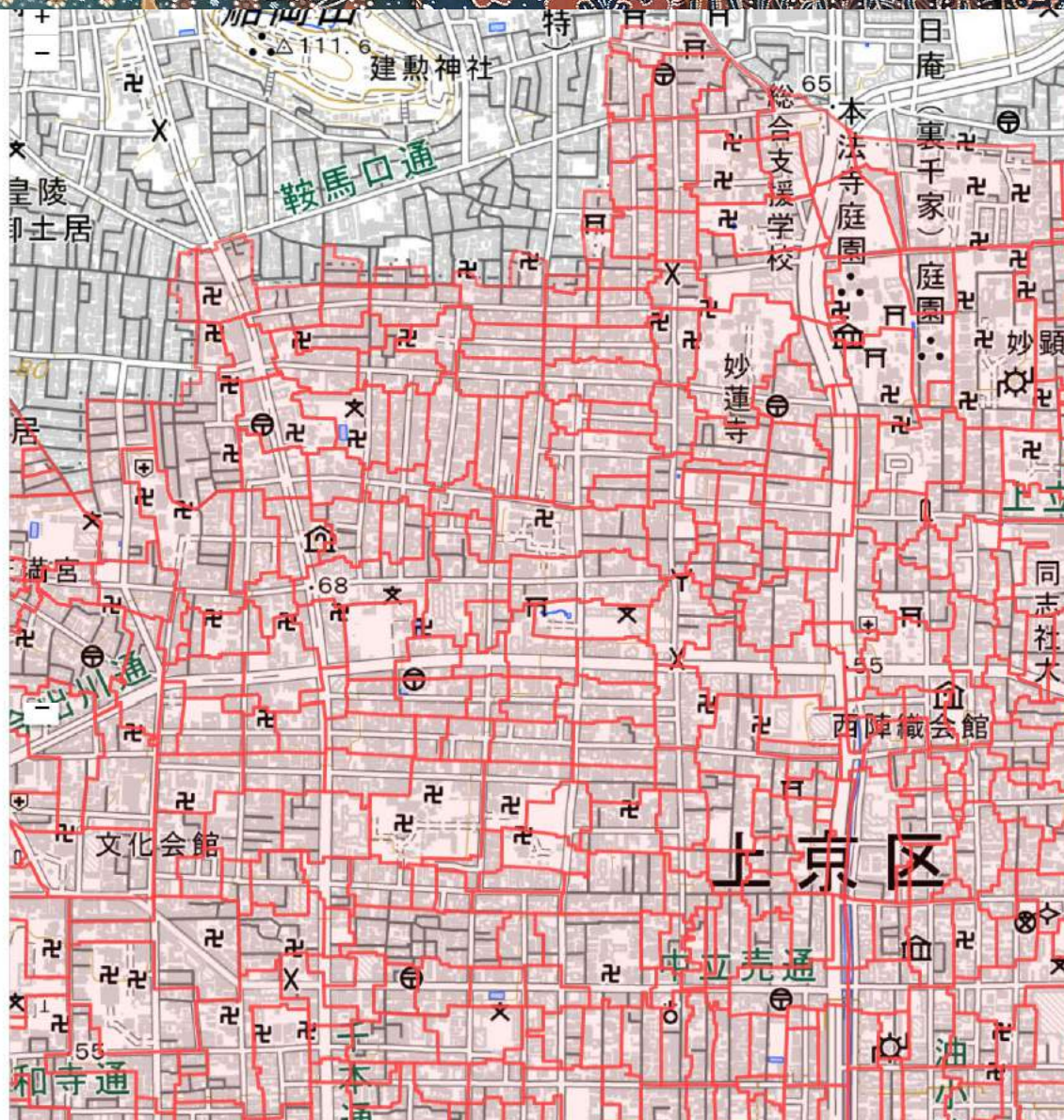
↓
After ca. 1970's

Depopulation of younger generation in the historic area
Urban sprawl to the outskirts

↓
1990s-

Elementary school consolidation

Nishijin Cultural Landscape



Cho = Basic community units according to the street systems appeared with the reconstruction after civil war, were sustained up to now in the historic city area. (with some partial transformations)

Many units had self-governance by the inhabitants. For example, In the city center, Gion festival (World intangible Heritage) is operated by these systems.

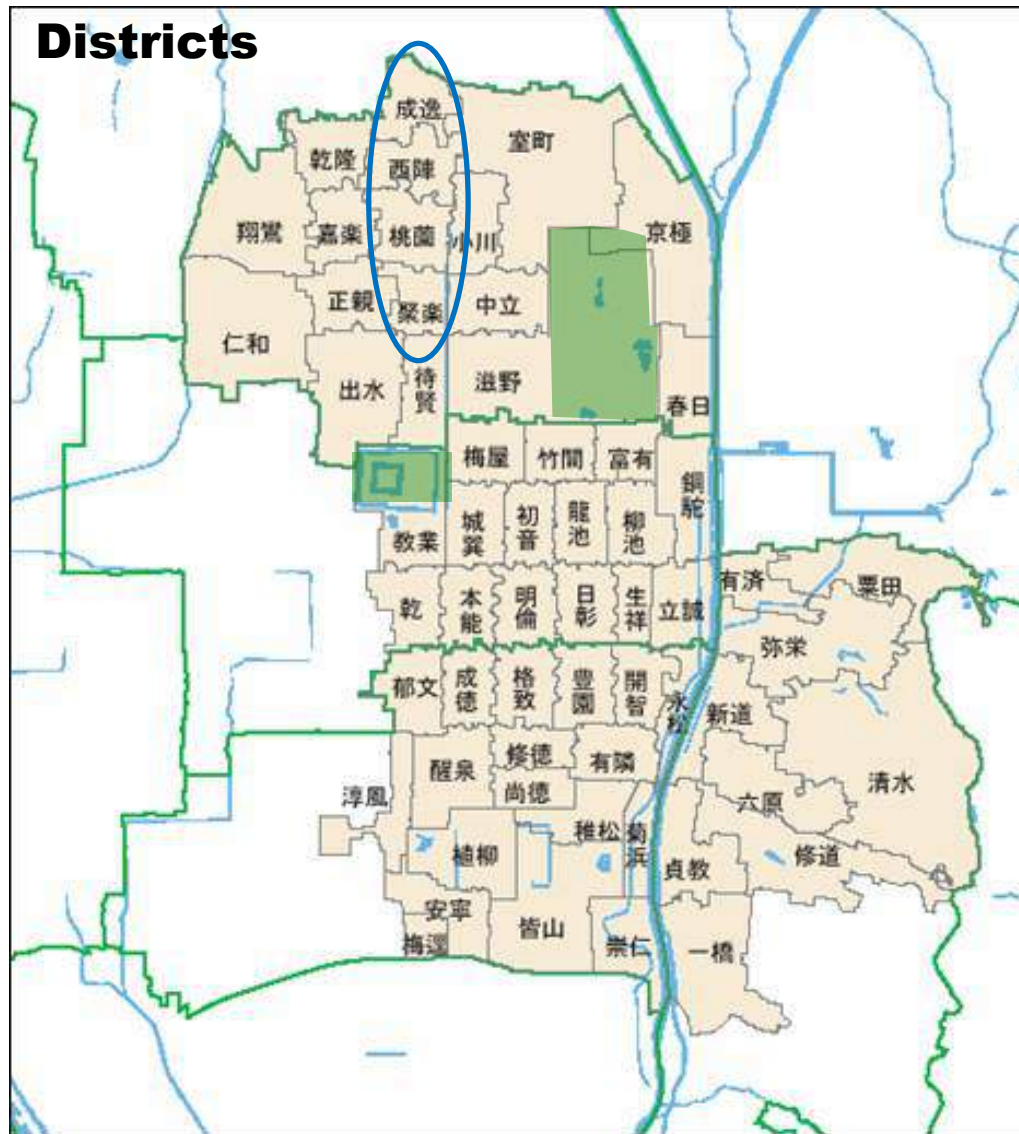
<https://geoshape.ex.nii.ac.jp/ka/resource/26102.html>

Development of Community system

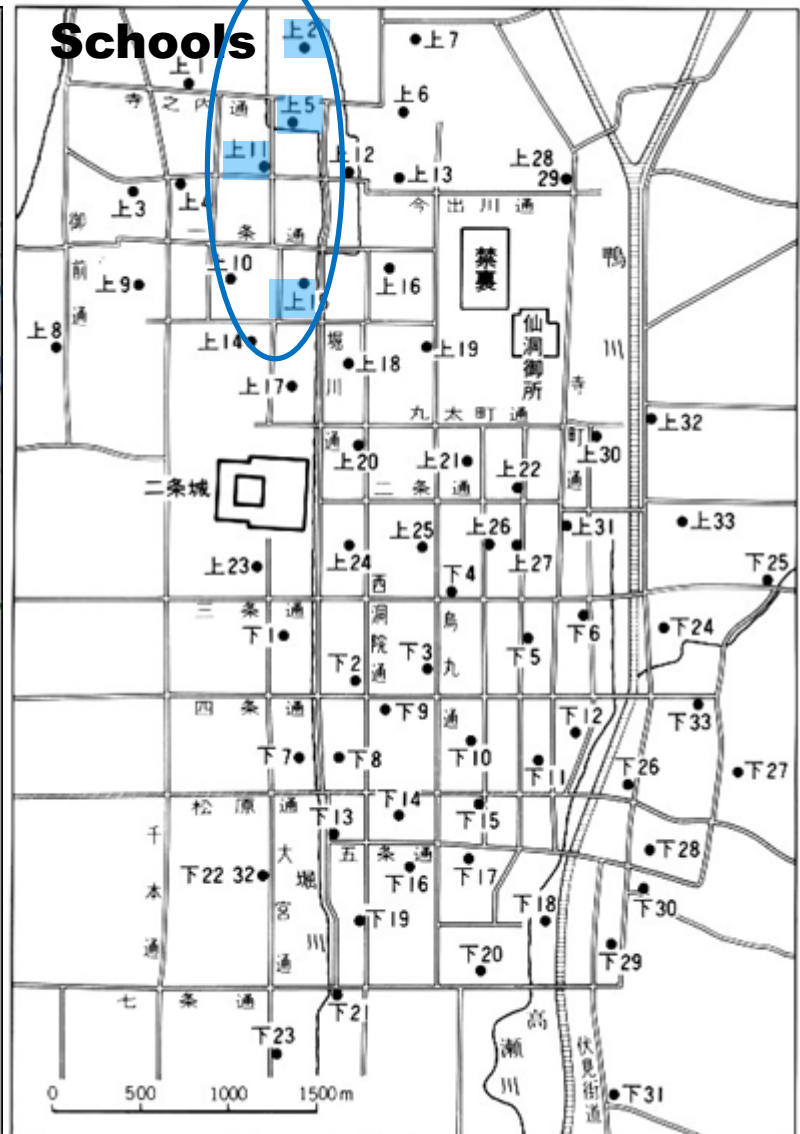
Nishijin Cultural Landscape

Former elementary school district 1868~

Districts



Schools



<https://www.city.kyoto.lg.jp/tokei/page/0000004248.html>

<https://www2.city.kyoto.lg.jp/somu/rekishi/fm/nenpyou/htmlsheet/toshi26.html>

Nishijin Cultural Landscape

Heritage architectures of the former elementary schools

Kyoto Art Center (with conservation + renovation)



School history museum (with conservation + renovation)



Nishijin Cultural Landscape



Nishijin Former elementary school

Built in 1934-36, now vacant, tentative uses from time to time

Community System of the former elementary school

Not only in historic area also in whole city area

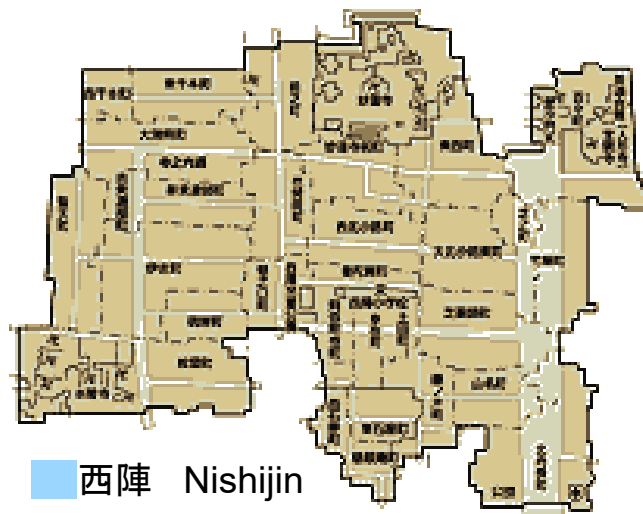
- Representatives from every CHO (Basic community units)



- Various groups
 - as participants of the city-wide association

public service, culture, safety, social welfare, friendship, etc.

- as original activity community development, utilization plan for vacant school site and building
→ owned by the city, but the community still keeps power to negotiation.
etc.



西陣 Nishijin

city-wide association

名 称	活動内容	担当部署
市政協力委員 (市政協力委員 連絡協議会)	市からの委託を受けて、広報物の配布、 展示や市民募集の取次ぎ等を行っています。 委員の身分は非活動特別公務員です。	文化市民局地域自治推進室 (☎222-3049)
日赤京都府支部 地区奉仕団	災害救済活動等のための社費(寄付金) や被災者への義援金の募集活動や献血事 業を行っています。	文化市民局地域自治推進室 (☎222-4072)
京都府共同募金 会地区分会	地域の福祉のための「赤い羽根共同募 金」の募集や、災害被災者への義援金の募 集を行っています。	文化市民局地域自治推進室 (☎222-4072)
交通対策協議会 (区によって名 称の違いあり)	交通安全に関する街頭啓発や交通安全 教室などを行っています。	文化市民局くらし安全推進課 (☎222-3193)
交通安全推進連 合会(区によっ て名称の違いあり)	交通安全に関する街頭啓発や交通安全 教室などを行っています。	文化市民局くらし安全推進課 (☎222-3193)
体育振興会	市民スポーツの振興のため、学区民運動 会や各種スポーツ大会などを開催してい ます。	文化市民局市民スポーツ振興室 (☎366-0169)
スポーツ推進委 員(スポーツ推進 委員会)	地域におけるスポーツ活動の推進や実 技指導を行っています。委員の身分は非 活動特別公務員です。	文化市民局市民スポーツ振興室 (☎366-0169)
民生委員・児童 委員(民生児童委 員会)	福祉に関する相談や援助を行い、地域福 祉のネットワークづくりに努めています。 委員の身分は非活動特別公務員です。	保健福祉局健康長寿企画課 (☎746-7713)
社会福祉協議会	地域福祉の中枢として、高齢者や介護の 必要な方々に対する配食などの支援や交 流事業などを行っています。	保健福祉局健康長寿企画課 (☎746-7713)
すこやかクラブ (若人クラブ)	60歳以上の高齢者で構成し、交流活動 や健康づくり活動、地域貢献活動などに 取り組んでいます。	保健福祉局健康長寿企画課 (☎222-3419)
保健委員 (保健協議会)	地域の保健衛生や生活環境の向上を目 指して、広報物の配布等の啓発活動や各種 事業を行っています。	保健福祉局健康長寿企画課 (☎222-3411)
地域献血会	医療用血液の確保のため、移動採血車 による献血や、献血に関する啓発活動を行 っています。	保健福祉局健康長寿企画課 (☎222-3419)
消防団 (消防団)	火災予防啓発や巡回パトロールを行い、 火災時には消火活動を実施します。団員 の身分は非活動特別公務員です。	消防局消防団課 (☎212-6632)
自主防災会	災害時に効果的な自主防災活動を行え るよう、防災知識の普及や防災器材の維 持管理、防災訓練などに取り組んでいま す。	消防局市民安全課 (☎212-6692)
地域女性連合会	男女共同参画社会の実現に向けた活動 や、地域における福祉、環境、文化など の活動に取り組んでいます。	教育委員会生涯学習部生涯学習推進 担当 (☎251-0445)
P.T.A連絡協 議会	児童の保護者と教職員で構成し、子ども の健全育成や家庭教育の充実を目指して、 見守り活動や研修などを行っています。	教育委員会生涯学習部家庭教育教育 担当 (☎251-0456)
防犯推進委員 (防犯推進連絡 協議会)	地域の防犯のため、パトロールや講演 会、街頭防犯、広報誌の配布などを行っ ています。	京都府警察本部生活安全企画課 (☎451-9111)
少年指導委員 (少年指導委員 会)	少年の非行防止を目指して、パトロー ルや啓発活動、有害サイトの除去などに取 組んでいます。	京都府警察本部少年課 (☎451-9111)

Board members = ca. 30~50 prs. ?

Election of Chair person

“Decision Making” function

→ Balance of Power for the city government, if active enough.

Population of inhabitants are crucial

<https://www5.city.kyoto.jp/chiikinpo/images/jichikai/tebiki/18.pdf>

1990s- Elementary school consolidation

Example:

4 former elementary schools

■ 成逸	Seiitsu	}
■ 西陣	Nishijin	
■ 桃蘭	Toen	
■ 聚楽	Juraku	

After long discussion

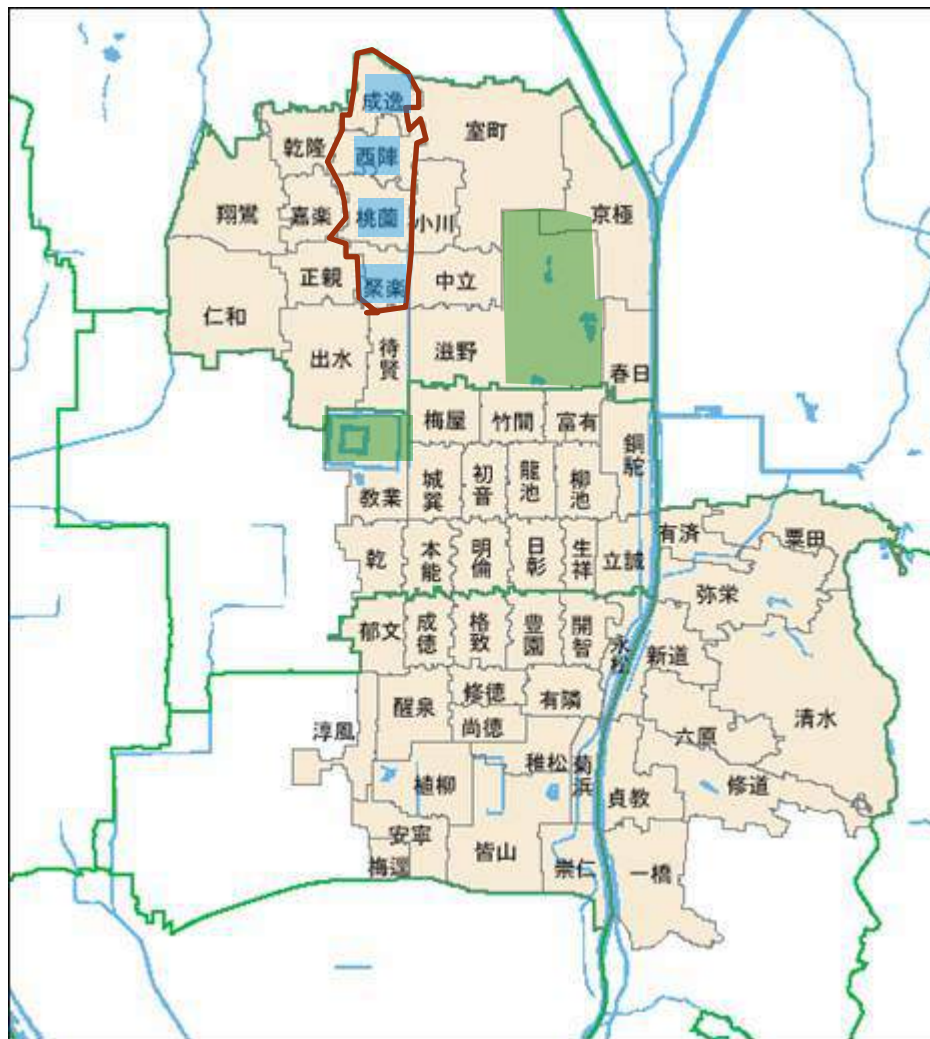
西陣中央
**Nishijin Chuo
Elementary
School**
1997~

4 former elementary
school communities
continue as the
community systems

New community
system with
4 communities'
cooperation

School management council

Policy of education, collaboration, etc.



<https://www.city.kyoto.lg.jp/tokei/page/0000004248.html>

Nishijin Cultural Landscape

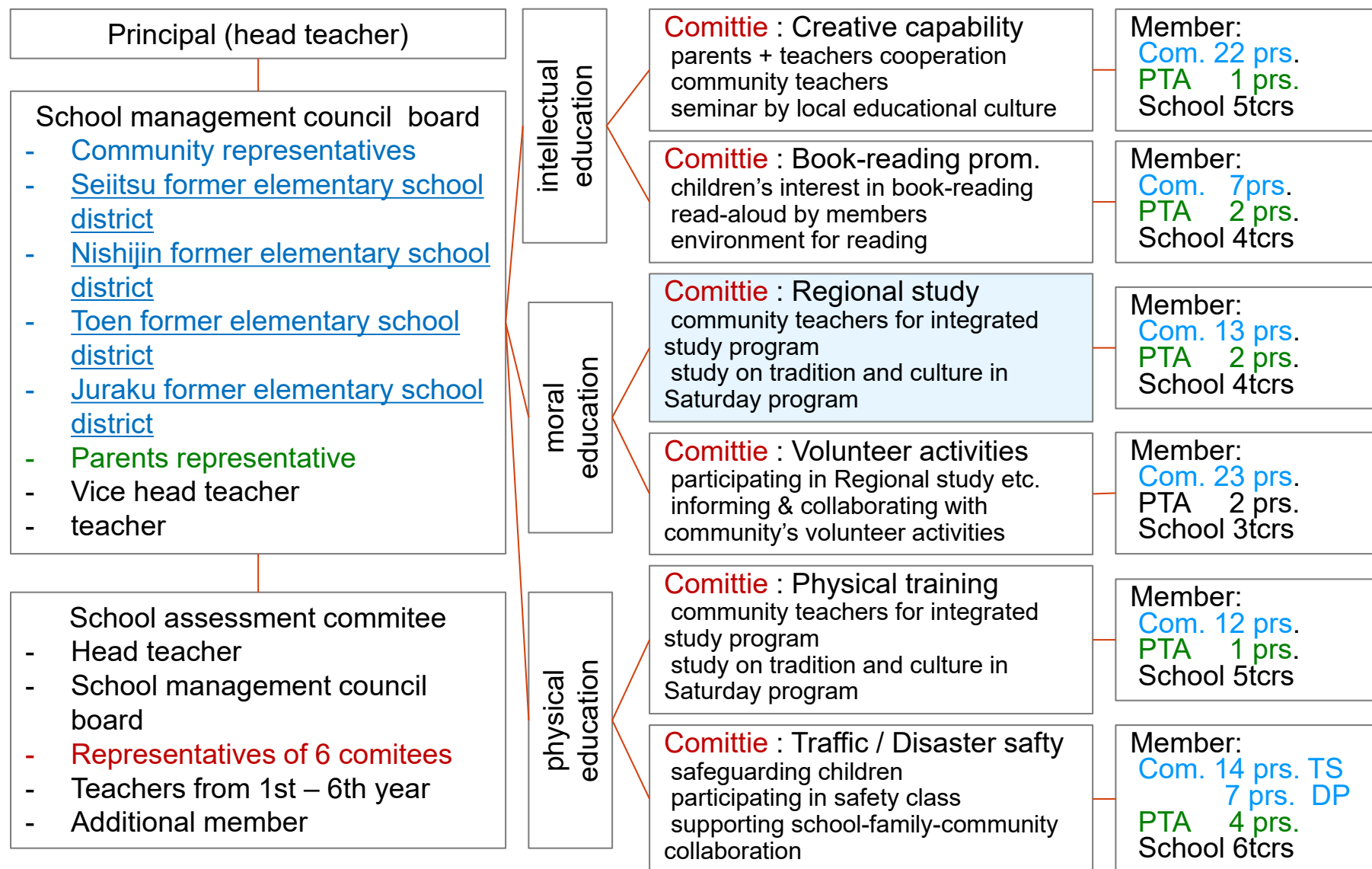


Nishijin chuo elementary school

Built in 1997, after Toen former elementary school, increasing in number of pupils

School management council

Sharing the policy for education



Nishijin Cultural Landscape





Nishijin Cultural Landscape



Beautiful ceiling of Japanese-style room
succeeded from Toen former elementary school



Nishijin Former elementary school

Built in 1934-36, now vacant, tentative uses from time to time

Long term activity
for conserving as
educational site

Nishijin Cultural Landscape



Kyoto Univ.
students' activity

Nishijin Cultural Landscape

Community systems as cultural heritage

KYOTO

794-1867 Capital City

794 Planned City with grid-street systems

1467-77 Civil war (Ohnin no ran)

Development of Community system

1868- Modernization Era

“Modernization of Kyoto”

earliest in JPY

→Elementary schools were established and constructed by the new community system which formed of the basic units. The schools was with community's self budget, also used as the community's office and hall.

↓
After ca. 1970's

Depopulation of younger generation in the historic area
Urban sprawl to the outskirts

↓
1990s-

Elementary school consolidation

Nishijin Cultural Landscape

Community systems as cultural heritage KYOTO

794-1867 Capital City

794 Planned City with grid-street systems

1467-77 Civil war (Ohnin no ran)

Development of Community system

1868- Modernization Era

“Modernization of Kyoto”

→Elementary schools were established and constructed by the new community system which formed of the basic units. The schools was with community’s also used as the community’s office and hall

↓
After ca. 1970’s

Depopulation of younger generation in the historic area
Urban sprawl to the outskirts

↓
1990s-

Elementary school consolidation

Traditional Textile Industry as Cultural Heritage Nishijin Textile

Ancient textile industry located

1467-77 Name of “Nishijin”
(Western base)

Development of textile industry

Decline at the chaotic time

earliest in JPN

Modernization, Innovation
machinery, programing
Imported technology

Difficulty in traditional industries
more sophisticated, new culture
+ movement for heritage

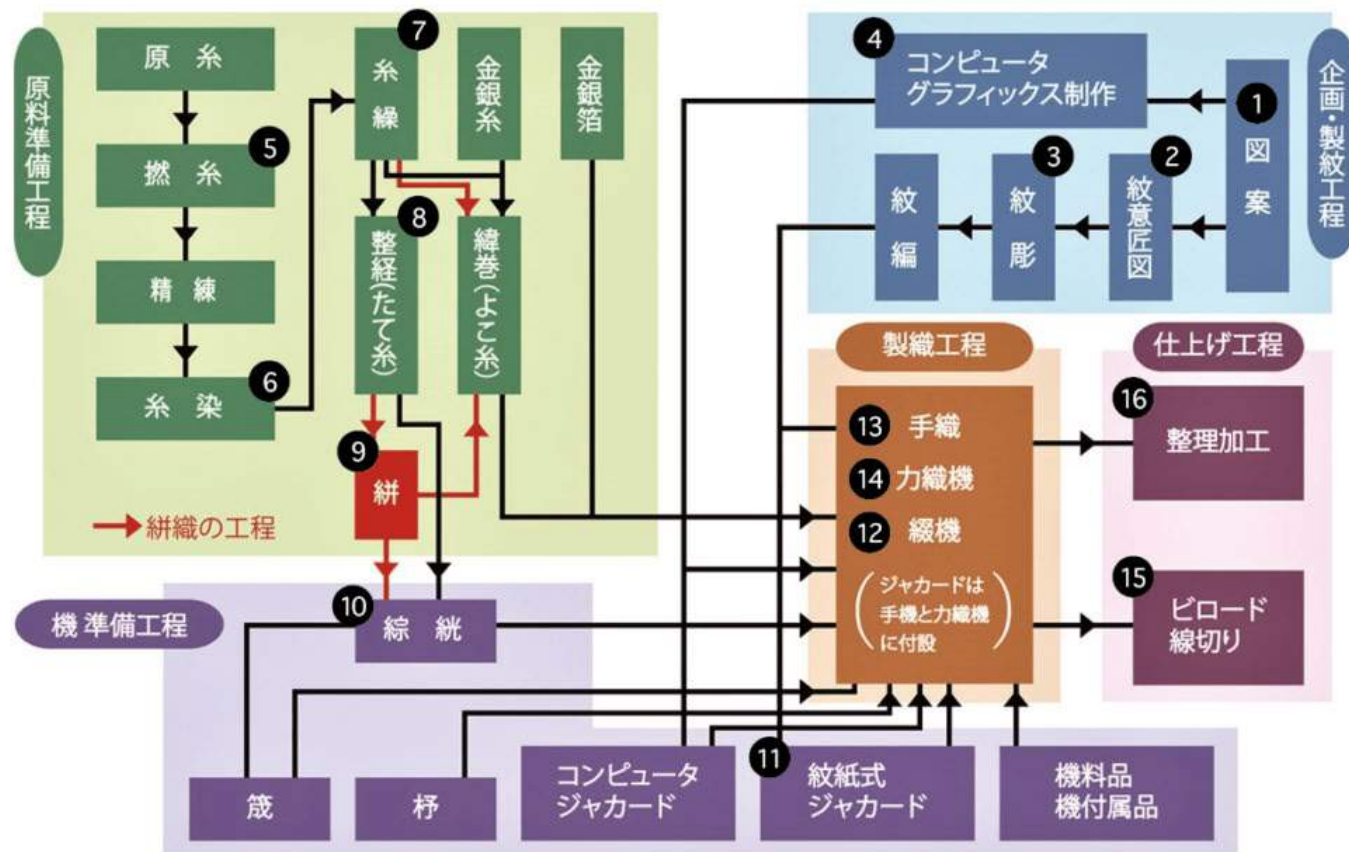
Nishijin Cultural Landscape

Nishijin Textile Industry → community members

Production Process of Nishijin Textile:

Lots of works = Lots of multi-sized workshops

Large sized company ----- Room-sized workshop in House



Nishijin Cultural Landscape

https://maps.gsi.go.jp/#18/35.031427/135.749053/&base=std&ls=std%7Cort_old10&blend=0&disp=11&lcd=ort_old10&vs=c1j0h0k0l0u0t0z0r0s0...

地理院地図 / GSI Maps | 国土地理院

1960s



**Not divided,
Integrated
In community**

**Nishijin as
high-density
housing area**

**Craft persons
Factory owners
Employees
Marchants
Traders**

**Shops
Restaurants
Pubs
KIOSKs
Public services**

*

**Artistic
Ceremony
Religious
Social welfare
Labor activities**

In not-large area

Nishijin Cultural Landscape

<https://maps.gsi.go.jp/#18/35.031427/135.749053/&base=std&ls=std%7Cgazo1%7Cgazo4&blend=00&disp=111&lcd=gazo4&vs=c1JhU0U0U0U0U0z...>

地理院地図 / GSI Maps | 国土地理院

1980s



**Not divided,
Integrated
In community**

**Nishijin as
high-density
housing area**

**Craft persons
Factory owners
Employees
Marchants
Traders**

**Shops
Restaurants
Pubs
KIOSKs
Public services**

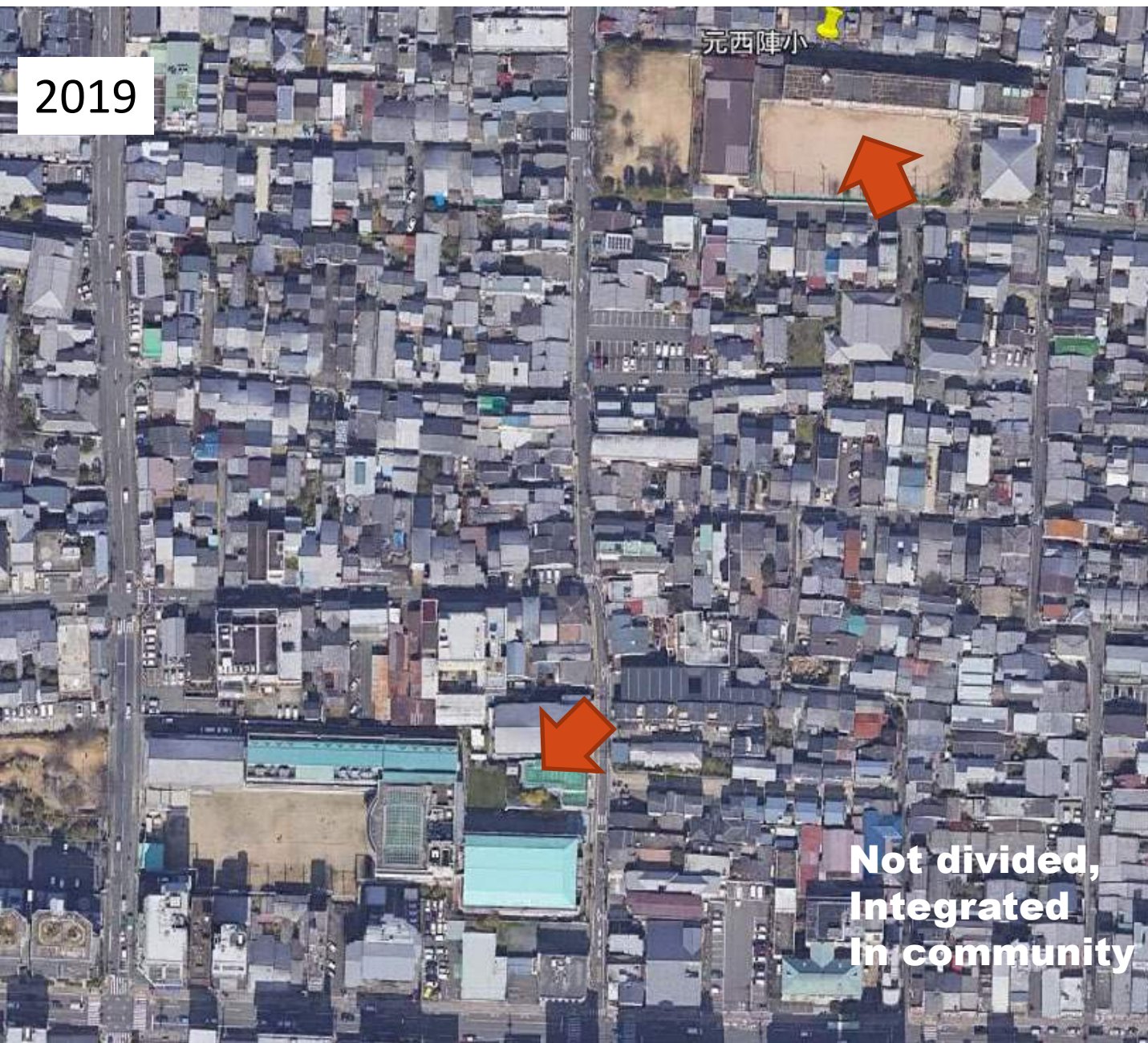
*

**Artistic
Ceremony
Religious
Social welfare
Labor activities**

In not-large area

Nishijin Cultural Landscape

2019



**Nishijin as
high-density
housing area**

**Craft persons
Factory owners
Employees
Marchants
Traders**

**Shops
Restaurants
Pubs
KIOSKs
Public services**

*

**Artistic
Ceremony
Religious
Social welfare
Labor activities**

**Not divided,
Integrated
In community**

In not-large area

Nishijin Cultural Landscape

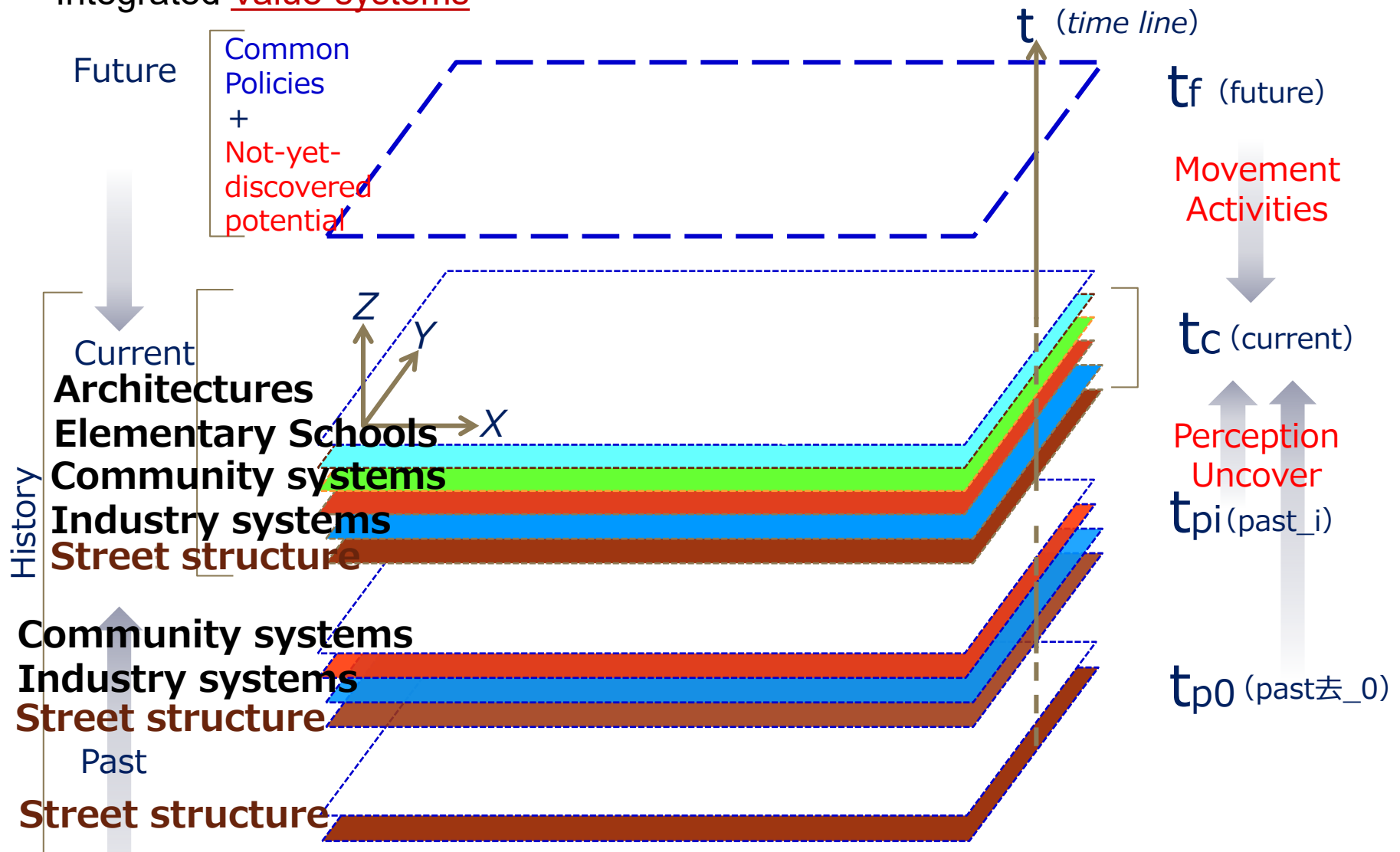
Nishijin KIMONO industry as the nodes of cultures

Linkages with lifestyles, various cultures, spaces



Nishijin Cultural Landscape

Time line Layers of every moment in the history and in the future,
Integrated Value-systems



Nishijin Cultural Landscape

Community ----- Traditional Industry

Both are CULTURAL HERITAGE

Those are related systems

Community systems with elementary school might be more powerful & sustainable.

In Nishijin, community systems are active for education, and community members are related to the industry.

**Respects for children as they are and they would be Supporting them with the top quality of heritages.
In long term, these respects are for cultural Heritages.**

**→ To the Short movie of Nishijin Chuo Elementary School
Thank you for your attention!**